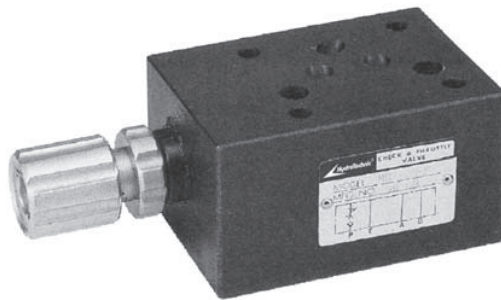


# HydroTechnic® Modular Control Valves

## Modular Check Throttle Valves " MCT " Series

### ◆ MODEL

MCT-03 SERIES



### ◆ SPECIFICATIONS

Model Number	Maximum Pressure bar	Connecting PT	Maximum Flow lpm	Weight Kg
MCT-03-P	315	3/8"	100 (26.4 gpm)	2.6 (16.5 lbs)
Fluid Type			ISO VG 32 , 46 , 68	
Viscosity cSt			10~400 (59~1854 SSU)	
Operating Temperature °C			-15~70 (-5~158 °F)	
Contamination Level			$\beta_{10} \geq 75$ , Under NAS Class 12, 25 $\mu$	
Surface Treatment			Zinc Phosphate Compound	

### ◆ HOW TO ORDER

1	2	3	4
MCT	03	P	20

#### 1 VALVE SERIES

MCT=Modular Control Restrictors Valves

#### 2 SUBPLATE MOUNTING SIZE:

03 = 3/8"(9mm)  
ISO CETOP5  
DIN NG 10  
NFPA D05

#### 3 CONTROL PORT(S)

P=P Port Only



#### 4 DESIGN NO



MCT Series