

HydroTechnic® Modular Control Valves

Modular Throttle And Check Valves " MTC " Series

◆ MODEL

MTC-04 SERIES



◆ SPECIFICATIONS

Model Number	Maximum Pressure bar	Connecting PT	Maximum Flow lpm	Weight Kg
MTC-04-A, B	315	1/2"	190 (50.19 gpm)	5 (11.0 lbs)
MTC-04-W				5.5 (12.1 lbs)
MTC-04-AI, BI				5 (11.0 lbs)
MTC-04-WI				5.5 (12.1 lbs)
Fluid Type		ISO VG 32, 46, 68		
Viscosity cSt		10~400 (59~1854 SSU)		
Operating Temperature °C		-15~70 (-5~158 °F)		
Contamination Level		$\beta_{10} \geq 75$, Under NAS Class 12, 25 μ		
Surface Treatment		Zinc Phosphate Compound		

◆ HOW TO ORDER

1	2	3	4	5	6
MTC	04	W	I	*	20

1 VALVE SERIES

MTC= Modular Throttle And Check Valves

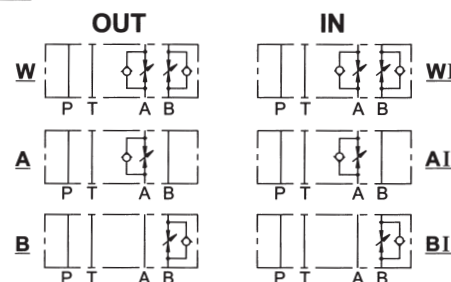
2 SUBPLATE MOUNTING SIZE:

04 = 1/2" (12mm)
ISO CETOP7
DIN NG 16
NFPA D07

4 ACTION ORIENTATION

NONE : OIL OUT
I : OIL IN

3 ACTION FORM



5 SHAPE

NONE: TOOL ADJUST
K: HAND-BAR ADJUST

6 DESIGN NO



MTC Series