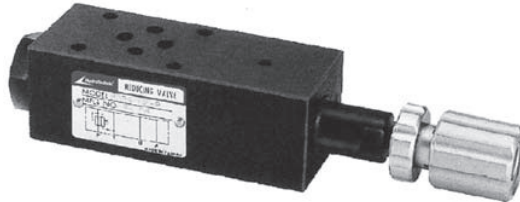


HydroTechnic® Modular Control Valves

Modular Balance Valves "MSGR" Series

◆ MODEL

MSGR-02 SERIES



◆ SPECIFICATIONS

Model Number	Maximum Pressure bar	Connecting PT	Maximum Flow lpm	Weight Kg
MSGR-02-A	315	1/4"	40 (10.56 gpm)	1.9 (4.2 lbs)
Fluid Type		ISO VG 32 , 46 , 68		
Viscosity cSt		10~400 (59~1854 SSU)		
Operating Temperature °C		-15~70 (-5~158° F)		
Contamination Level		$\beta_{10} \geq 75$, Under NAS Class 12, 25 μ		
Surface Treatment		Zinc Phosphate Compound		

◆ HOW TO ORDER

1	2	3	4	5	6
MSGR	— 02	— A	1	— *	— 20

1 VALVE SERIES

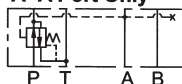
MSGR=Modular Balance Valve

2 SUBPLATE MOUNTING SIZE:

02 = 1/4" (6mm)
ISO CETOP3
DIN NG 6
NFPA D03

3 CONTROL PORT(S)

A=A Port Only



4 PRESSURE ADJUSTMENT

1. 1.5~70 (bar)
2. 8~140 (bar)
3. 8~250 (bar)

5 SHAPE

NONE: TOOL ADJUST
K: HAND-BAR ADJUST

6 DESIGN NO



MSGR Series