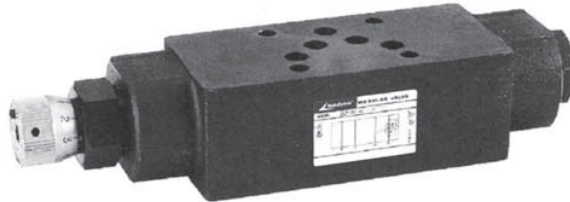


# HydroTechnic® Modular Control Valves

Modular Pressure Temperature Compensated Flow Control and Check Valves " MOCF " Series

## ◆ MODEL

MOCF-03 SERIES



## ◆ SPECIFICATIONS

Model Number	Maximum Pressure bar	Connecting PT	Control Flow lpm	Weight Kg
MOCF-03- A, B	250	3/8"	0.5~60( Δ P: 70bar) 1~60( Δ P: 250bar)	4.6 (10.1 lbs)
MOCF-03-W				5 (11.0 lbs)
MOCF-03- AI, BI				4.6 (10.1 lbs)
MOCF-03-WI				5 (11.0 lbs)
<b>Fluid Type</b>			ISO VG 32 , 46 , 68	
<b>Viscosity</b> cSt			10~400 (59~1854 SSU)	
<b>Operating Temperature</b> °C			-15~70 (-5~158 °F)	
<b>Contamination Level</b>			$\beta_{10} \geq 75$ , Under NAS Class 12, 25 $\mu$	
<b>Surface Treatment</b>			Zinc Phosphate Compound	

## ◆ HOW TO ORDER

1	2	3	4	5
MOCF	03	W	I	20

### 1 VALVE SERIES

MOCF= Modular Pressure Temperature Compensated Flow Control and Check Valves

### 2 SUBPLATE MOUNTING SIZE:

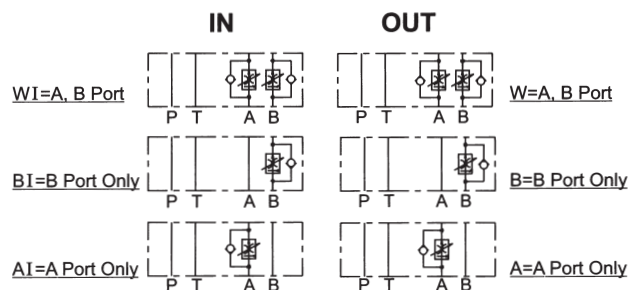
03 = 3/8"(9mm)  
ISO CETOP5  
DIN NG 10  
NFPA D05

### 4 ORIENTATION

NONE : OIL OUT  
I : OIL IN

### 5 DESIGN NO

### 3 CONTROL PORT(S)



MOCF Series